

Back to School Newsletter 2010-2011

Volume I, Issue I

August 2010

Special points of interest:

- Welcome back from our Director, Ms. Binny.
- Classroom/Teacher Updates.
- School closures and schedule through December 2010.
- New Musical Direction
- New Security Cameras
- Extracurricular activities and schedules

Forms of Communication:

School Newsletters

Monthly Classroom Calendars

E-Mail Communication—Weekly Reminders

Telephone Communication

Notices & Posters

Letters & Documents at the front desk

Communication is key to an efficient educational facility as we strive to grow and learn together.

Dear Parents:

We would like to extend a warm welcome to the parents of all existing, returning, and new students! Our commitment to you is to continue to provide an excellent educational environment. The first week of school is an emotional time for students, parents, and teachers. Your cooperation is needed to help the children through their transition. Here are some suggestions which have proven helpful:

1. Please use the carpool lane from 7:30-8:30am. It is easier for your child to walk away from you, than for your child to see you walk away from them.
2. It is essential for your child to be dropped off no later than 8:30am. By dropping your child off at this time, they will start the day along with their classmates and get the full benefit of being enrolled at Warren.
3. It is normal for children to cry when being dropped off by their parents. Please reassure your child of the time you will be back (after naptime, after playtime), give them a hug and kiss, then leave.
4. Please make an appointment at the front desk if you need to speak to your child's teacher about any concerns. The safety of the children comes first so the teachers' focus will be on them during drop off and pick up times.
5. Please ensure that the extra clothing you bring on the first day of school fits and is warm weather appropriate. Be sure all clothing is labeled with your child's name and is secured in a zip-lock bag. Limited space does not allow for backpacks or

extra large blankets and pillows. You may purchase a bedroll from Academic Outfitters for your child to nap on.



"As Montessorians, we make a contribution to the challenging and complex times in which we live by working with very young children. In serving the child, we also serve future generations of humanity. It is this perspective that gives our work a wider significance."

Continued....

6. Uniforms are required Monday-Thursday for children 3 years and older. Uniforms aren't required for 2 year olds, **but** they need to wear white or red collared shirts with navy bottoms.
7. Please bring **ALL** necessary paperwork on the first day of school.
8. Tuition should be paid on the first day of school and will begin accruing a late fee of \$8 per day on top of tuition beginning August 6th.
9. Teachers' names will be posted outside of each classroom for your reference as we have made several classroom location changes in preparation for this new school year.

If you have any questions, suggestions, or concerns please feel free to contact us at (214) 387-8202. We will be more than willing to help.

Welcome Back!

Binny Jawanda



"We discovered that education is not something which the teacher does, but that it is a natural process which develops spontaneously"

"I have never let my schooling interfere with my education."
Mark Twain



"Purpose is to replace an empty mind with an open one."
Malcolm Forbes

Classroom/Teacher Updates

Infant 1: Ms. Akram, Ms. Indira, Ms. Mahboobeh

Infant 2: Ms. Gabby, Ms. Sonia, Ms. Mojgan

Pre-Toddler: Ms. Betty, Ms. Fezzeh

Toddler 1: Ms. Gregoria, Ms. Sepideh, Ms. Ellie

Toddler 2: Ms. Shazia, Ms. Megan, Ms. Mahsa

Primary 1: Ms. Farah, Ms. Lu, Ms. Vibha

Primary 2: Ms. Jessica, Ms. Sharon, Ms. Joanne

Primary 3: Ms. Julie, Ms. Veni, Ms. Angie

Primary 4: Ms. Geetha, Ms. Parisa, Ms. Najmeh

Elementary: Ms. Suzanne (Teacher Bios coming soon)
Ms. Gregoria's Toddler 1 classroom is now located behind the second door to your left down the Toddler/Primary hallway to your right upon entering Warren.

Ms. Geetha's Primary 4 class-

room has relocated further down the hall to the last classroom on your left.

Our Elementary classroom has also moved from the Infant/Pre-Toddler side to the Toddler/Primary side and is the first classroom to your right.

There will be signs outside the classrooms to help, and as always please stop by the front desk with any questions!

School closures/schedules through December 2010 -

July 30th-Aug. 3rd : Staff Training & Preparation

Sept 6th : Labor Day

Oct. 22nd : Parent/Teacher Conference Day

Nov. 24th-26th : Thanksgiving

Dec. 22nd : *Early Dismissal

Dec. 23rd-31st : Christmas break

*Early dismissal will be at 3PM

Aug. 4th : 1st Day of School !

Aug. 10th : New Parent Orientation

Sept. 14th : New Parent Orientation

Sept. 22nd : Parent Education for Infant and Toddler parents

Sept. 23rd : Parent Education for Primary parents

Oct. 7th : Continuing Education

Oct. 12th : New Parent Orientation

tation

Oct. 12th-15th : Isaac Photography

Oct. 18th-22nd : Scholastic Book Fair

Oct. 22nd : Parent/Teacher Conference Day

Oct. 29th : Halloween Party

Nov. 8th-19th : Canned Food Collection

Nov. 9th : New Parent Orientation

School closures/schedules continued, plus WMPO News!

tion

Nov. 19th : Thanksgiving Feast

Dec. 6th-17th : Toy Collection Drive

Dec. 14th : New Parent Orientation

Dec. 22nd : Early Dismissal at 3:00pm

Dec. 23rd-31st : Christmas break

Help us welcome the following Warren Montessori Parent Organization leaders:

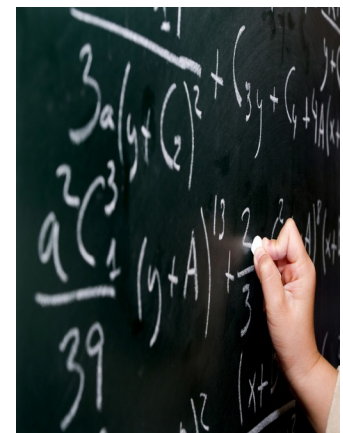
President—Jennifer Miller

Vice President—Wendy Wheeler

Secretary—Andrea Selmon

Treasurer—Sanober Kassimali

CONGRATULATIONS!



New Musical Direction & New Security Cameras

Join us in welcoming Shepard Music Experience to Warren Montessori!

Headed by Mr. Darrell Shepard, Shepard Music Experience holds classes in 17 local schools and has over 14 years of experience. They will be taking over our Music/Drama program this school year. The classes will be 30 minutes long and all of his teachers hold music degrees. We look forward to making magnificent and magical music!



SAFETY FIRST!

We would also like to share our excitement over the installation of our new security camera system. There are now cameras in every classroom in Warren, along with the car-pool lane and playground cameras, to help us monitor all classroom, gym, and outdoor activities. We are also having a 47" viewing monitor installed on the wall opposite of the front desk for your convenience.



School programs & extracurricular activity schedules:

Programs provided by Warren are as follows:

Spanish class—Wednesdays

Computer class—Fridays

Music/Drama—Mondays

All school programs occur in the morning and consist of age appropriate material.

Our extracurricular programs consist of the following:

Play for Sport—Tues & Wed.

Sheena's Dance—Mondays

Abakadoodle Art—Wed.

North Dallas Golf—Thurs.

Martial Arts—Thurs.

Just for Flips—Fridays

Einstein Kidz—Fridays

All extracurricular programs

are separate from Warren Montessori although the classes are taught in-house.

If you have any questions about registering your child for any of these programs, please contact Ms. Jessica at the front desk, or stop by to pick up the program brochures supplied to us by the specific companies.

Thank you!

“Imagination is more important than knowledge. Knowledge is limited. Imagination encircles the world.”

Albert Einstein

Tuition update / Late Fees / Made With Love Lunches

As of August 1, 2010, monthly tuition changes will be reflected. Please confirm your child's tuition amount before paying August tuition to prevent account discrepancies.

The following late fee charges will be applied as needed beginning August 1, 2010:

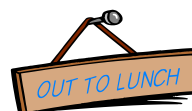
1. \$1.00 per minute if your child is picked up after 11:45am (half day program), 3:05pm (school day

program), 6:05pm (full day program). The late fee will be added to the next month's tuition. If you are in need of additional care the charge is \$10.00 per hour and must be scheduled an hour in advance.

2. \$8.00 per day added to any tuition amount that is paid after the 5th of the month. A two-day grace period will be given if the 1st of the month falls on a

weekend.

Lunch Menus are emailed out along with hard copies for pick up on the information desk in the lobby area. Checks need to be made out to: **Made With Love**, and the payments turned in with completed menus no later than the 22nd of each month.



If you've not paid for your child's lunch in advance, and they do not bring a lunch from home, they will be provided a meal by Made With Love. If this occurs you will need to pay \$5.00 for the provided lunch.

**WARREN
MONTESSORI
SCHOOL OF FRISCO**

10247 Warren Parkway
Frisco, TX 75035

Phone: 214-387-8202
Fax: 214-387-4807
E-mail:

info@warrenmontessori.com

Warrenmontessori.com

UNIFORMS ARE BACK IN ACTION!

Uniforms are back in August! After a summer of casual clothing wear, we ask that beginning August 4th, students come dressed in the appropriate attire. If your child has grown, or if you would simply like to order more uniforms, brochures may be picked up at the front desk. The company contact information is listed here for your convenience as well.

Academic Outfitters

721 N. Central Expressway

Plano, TX 75075

(972) 509-0010 / www.academicoutfitters.com

In Closing....

**“The first duty of education is to stir up life, but leave it free to develop.”
Maria Montessori**

In closing, we would like to wish everyone the best as we embark on an incredible adventure full of success and learning!

Parents:

I look forward to serving you and your children this school year. It's a pleasure and an honor to be a part of your lives.

Lets make this the best year ever!

Ms. Jessica -

